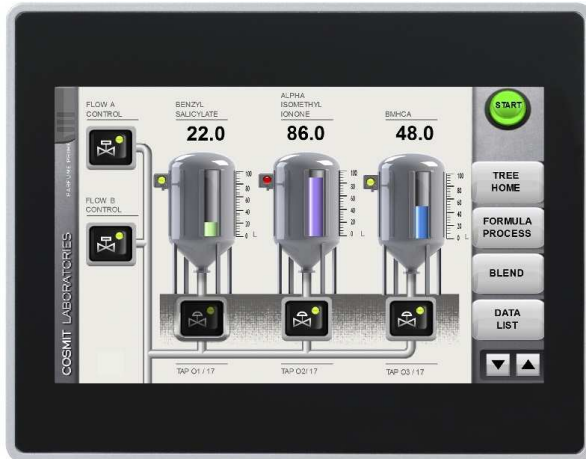


UniOP eTOP507

The UniOP eTOP Series 500 HMI products combine state-of-the-art features and top performance with an outstanding design. They are the ideal choice for all demanding HMI applications including factory and building automation.

The eTOP507 features a bright 7" TFT widescreen (16:9) display with a fully dimmable LED backlight. The JMobile software offers full vector graphic capabilities and plenty of connectivity options.



- 7" TFT color display, LED backlight
- 800x480 pixel (WVGA) resolution, 64K colors
- Resistive touchscreen
- 2 Ethernet ports with switch function
- 2 USB Host ports
- SD Card Slot
- Connection to fieldbus systems and I/O using optional plug-in modules
- Slim design. Mounting depth less than 50mm

Highlights

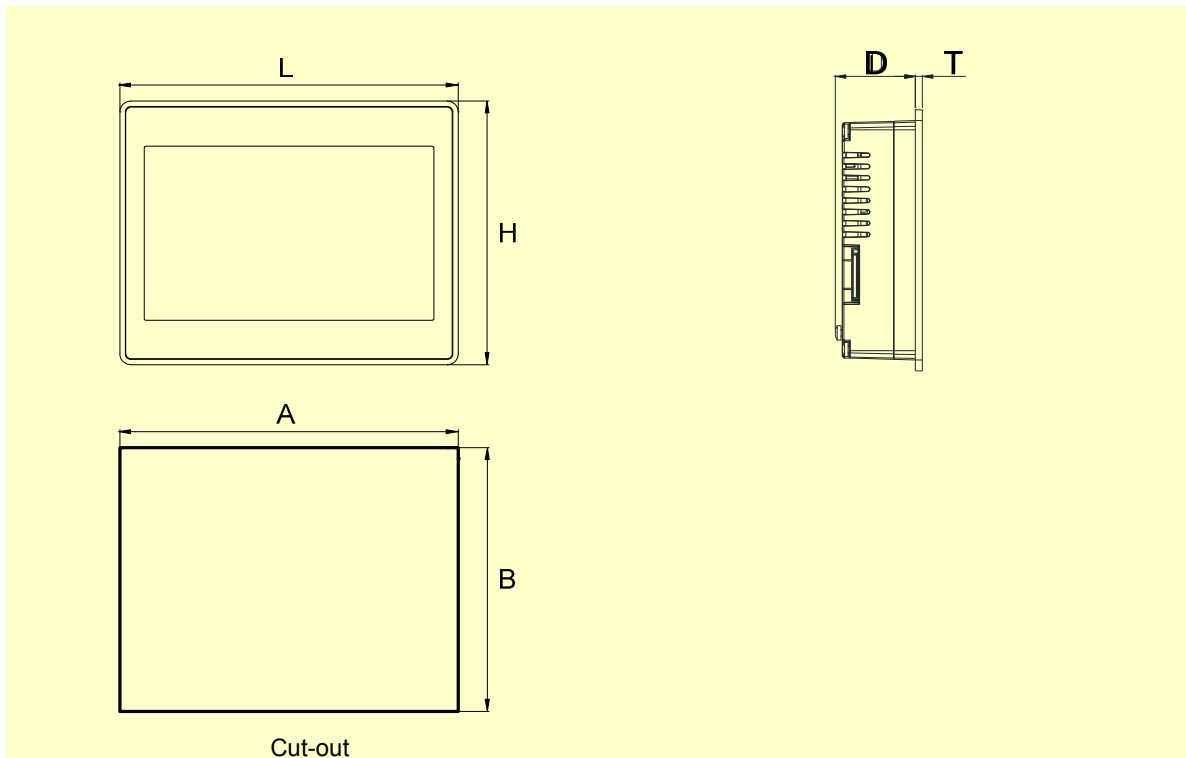
The eTOP Series 500 HMI panels have been designed to run the JMobile software.

- JMobile runtime included. Full compatibility with JMobile Studio.
- Full vector graphic support. Native support of SVG graphic objects. Transparency and alpha blending.
- Full object dynamics: control visibility and transparency, move, resize, rotate any object on screen. Change properties of basic and complex objects.
- TrueType fonts
- Multilanguage applications. Easily create and manage your applications in multiple languages to meet global requirements. Far East languages are supported. Tools available in JMobile Studio support easy third-party translations and help reducing development and maintenance costs of the application
- Data display in numerical, text, bargraph, analog gauges and graphic image formats.
- Rich set of state-of-the-art HMI features: data acquisition, alarm handling, scheduler and timed actions (daily and weekly schedulers, exception dates), recipes, users and passwords, e-mail and RSS feeds, rotating menus
- Includes support for a wide range of communication drivers for Factory and Building Automation systems.
- Multiple drivers communication capability.
- Remote monitoring and control. Client-Server functionality. Mobile clients supported.
- Remote maintenance and support with VNC-based functionality.
- Off-line simulation of the HMI application with JMobile Studio.
- Powerful scripting language for automating HMI applications. Script debugging improves efficiency in application development.
- Rich gallery of symbols and objects
- Project templates
- Optional plug-in modules for fieldbus systems, I/O and controllers.
- Display backlight dimmable to 0%

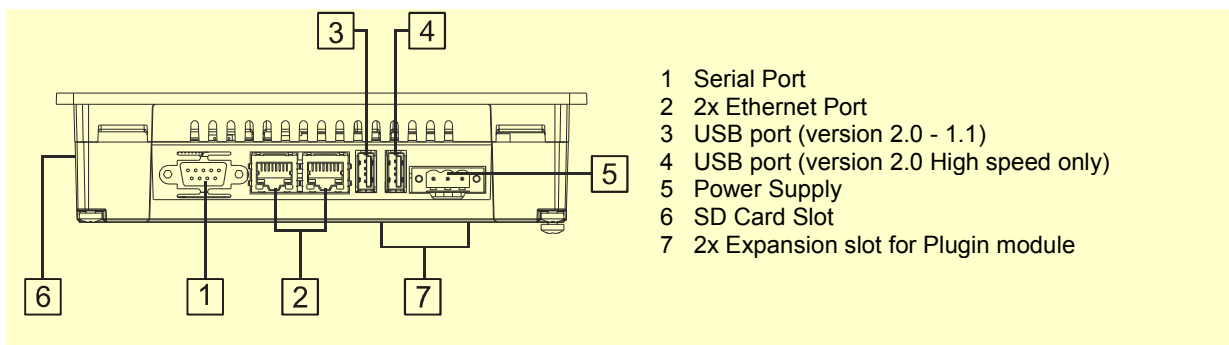
Technical Data

Display		Historical event list		Yes
Type	TFT	Users and passwords	Yes	
Resolution	800x480, WVGA	Hardware Real Time	Yes, with battery back-up	
Active display area	7" diagonal	Clock		
Colors	64K	Screen saver	Yes	
Backlight	LED	Buzzer	Yes, audible feedback for touchscreen	
Brightness	300 Cd/m ² typ.			
Dimming	Yes			
System Resources		Ratings		
Operating System	Microsoft Windows CE 6.0	Power supply voltage	24 Vdc (18 to 30 Vdc)	
User memory	128 MB Flash	Current consumption	0.7A at 24Vdc(max.)	
RAM	256MB DDR	Fuse	Automatic	
		Weight	Approx 1.0 Kg	
		Battery	Rechargeable Lithium battery, not user-replaceable	
Operator Interface		Environmental Conditions		
Touchscreen	Analog resistive	Operating temperature	0 to 50 °C (vertical installation)	
LED indicators	1 (dual color)	Storage temperature	-20 to +70 °C	
		Operating and storage humidity	5 – 85 % relative humidity, non-condensing	
		Protection class	IP66 (front) IP20 (rear)	
Interface		Dimensions		
Ethernet	2 10/100 Mbit with integrated Switch	Faceplate LxH	187x147 mm (7.36x5.79")	
USB	2 Host Interface (1 version 2.0, 1 version 2.0 and 1.1)	Cutout AxB	176x136 mm (6.93x5.35")	
Serial	RS-232, RS-485, RS-422, software configurable	Depth D+T	47+4 mm (1.85+0.16")	
Expansion Slot	2 Optional plug-in			
Memory Card	SD Card Slot			
Functionality		Approvals		
Vector graphics	Yes, includes SVG support	CE	Emission EN 61000-6-4	
Object dynamics	Yes. Visibility, opacity, position, size, rotation for most object types.		Immunity EN 61000-6-2 for installation in industrial environments	
TrueType fonts	Yes			
Multiple driver communication	Yes	DNV	DNV Type Approval Certificate	
Data acquisition and trend presentation	Yes. Flash memory storage limited only by available memory	UL	UL508 Listed	
Multilanguage	Yes, with runtime language switching.			
Recipes	Yes. Flash memory storage limited only by available memory			
Alarms	Yes			

Dimensions



Connections



Ordering Information

Model	Part Number	Description
eTOP507-White	+ETOP507U1P1	7" widescreen TFT color touchscreen with Ethernet and USB interfaces. White front panel. JMobile run-time.
eTOP507-Grey	+ETOP507U2P1	7" widescreen TFT color touchscreen with Ethernet and USB interfaces. Grey front panel. JMobile run-time.
eTOP507-Black	+ETOP507U3P1	7" widescreen TFT color touchscreen with Ethernet and USB interfaces. Black front panel. JMobile run-time.
PROTFOIL-07-GL	R-PROT12	Disposable protection foil for 5.7" and 7" eTOP touch panels (10 pieces).
PROTFOIL-07-UV	R-PROT18	Disposable protection foil for 5.7" and 7" eTOP touch panels (10 pieces). UV resistant.

ptn0347

Ver. 1.5

Copyright © 2011-2012 Exor International S.p.A. – Verona, Italy

Subject to change without notice

The information contained in this document is provided for informational purposes only. While efforts were made to verify the accuracy of the information contained in this documentation, it is provided "as is" without warranty of any kind.

www.uniop.com