



The new era of remote assistance



## Contacts

**ASEM | Artegna | Headquarters**  
Via Buia 4  
33011 Artegna (UD) | Italia  
Phone: +39/0432-9671  
Fax: +39/0432-977465

**ASEM | Giussano**  
Via Prealpi 13/A  
20833 Giussano (MB) | Italia  
Phone: +39/0362-859111  
Fax: +39/0362-859121

**ASEM | Germany**  
Phone: +49 (0) 160-97084139

email: [industrialautomation@asem.it](mailto:industrialautomation@asem.it)  
website: [www.asem.it](http://www.asem.it)

**Technical Support:**  
Email: [ubiquity@asem.it](mailto:ubiquity@asem.it)  
Phone: +39/0362-859124

<http://ubiquity.asem.it>

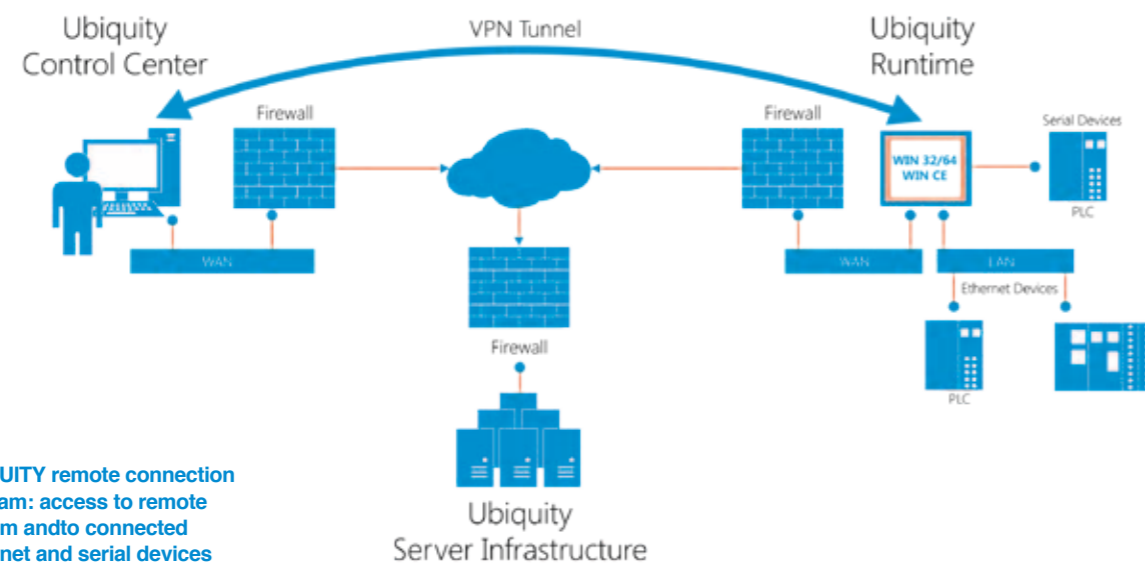
The only remote assistance solution with remotation of the automation subnetwork running on WinCE and Win32/64 environments



## Remote access software technology

The innovative remote assistance solution for Win CE and Win 32/64 environments that allows acting and operating on supervision and control systems in remote plants, cancelling distances and eliminating travel expenses.

Possible remote activities	Distinctive features
Remote assistance	Proprietary VPN optimized for Industrial Communication
Access, debug and programming of PLCs and automation devices	Available for Win 32/64 and Win CE platforms (100% functionalities on both the operating system)
Remote machine commissioning	Does not enquire additional hardware
Application updates and maintenance	Simple and user-friendly interface
Access to Ethernet and Serial sub-networks	SSL/TLS protocol encryption and use of certificates
Preventive and predictive maintenance	Automatic «Relay server» selection according to the minor latency
Remote desktop, remote process viewer, file management, chat...	Multi-client runtime



UBIQUITY remote connection diagram: access to remote system and to connected Ethernet and serial devices

## UBIQUITY Router

When and where to use it
In automation systems with devices running operating systems other than Win 32/64 and Win CE
In automation systems with devices without Ethernet port
In automation systems where you do not want to connect the Operator Panel / IPC directly to the internet
In automation systems where you do not want to install the software "Ubiquity runtime" on the Operator Panel / IPC

Interfaces
1 Ethernet port for Internet connection
1 Ethernet port for Automation devices
1 multistandard Serial port for Automation devices
1 USB port



### Control Center Software running on any Windows 32/64 system to access and manage remote devices

- Level 2 and level 3 VPN to the remote system and connected Ethernet devices
- Remote serial connection
- Remote desktop
- Remote file exchange tool
- Remote task manager. Process execution and termination
- Hardware and OS resources monitoring
- Chat
- Screenshot
- Accesses statistics
- User database, remote device, and access profile management
- Supports Windows XP, Vista, 7 (32 bit and 64 bit)
- Requires .Net Framework 3.5

### Runtime Software running on remote systems to enable access to them through the Internet

- Supports remote systems with 1 Ethernet (WAN) or 2 Ethernet (WAN + LAN), level 2 (data-link) and level 3 (network, IP) VPN
- Can be activated automatically, manually or directly from any application
- Allows displaying the connection status, as well as the log of accesses and executed remote operations
- Reduced memory and CPU usage
- Allows avoiding the installation of VNC, FTP server, folder sharing, PLC development environments, etc.
- Supports Windows CE 5.0, 6.0, 7.0 (ARM, X86), Windows XP, XP Embedded, Vista, 7 (32 bit and 64 bit)
- Requires .Net Compact Framework 3.5, 500 MHz CPU (at least), 256 MB RAM for Win CE 6.0 (or higher) OS.
- Requires .Net Framework 2.0 SP1, 500 MHz CPU (at least), 512 MB RAM for Win 32/64 OS

### Network infrastructure Replicated and redundant servers

- Enable secure connection between the supervisor and remote systems without any Firewall or NAT configuration
- Allows managing an unlimited number of device and users, that can be organised in different profiles and access groups
- Makes use of connection with SS / TLS protocol encryption and certificates
- Allows performance optimisation, creating a direct connection between the supervisor and remote systems (server exclusion)

### FEATURES OF THE ASEM UBIQUITY SOFTWARE

Version 1.3	WinCE		Win32/64	
	BASIC	PRO Eth	BASIC	PRO
Remote desktop, file&task management, chat, screenshot	•	•	•	•
VPN to the remote PC	•	•	•	•
VPN with access to the Ethernet subnetwork of the remote device	NO	•	NO	•
Remoted serial port (no MPI)	NO	NO	NO	•
API for interface with proprietor software applications	•	•	•	•
Runtime operations persistent log	•	•	•	•
Multiple connections from different Control Centers	•	•	•	•
Domain creation, hierarchical profiling of users and remote PCs	•	•	•	•
Internet connection by PROXY for Control Center and Runtime support	•	•	•	•
Connection in local network without license	•	•	•	•