



Quick Start Guide NETLink® USB Compact

Version

2_{en}

Before getting started:

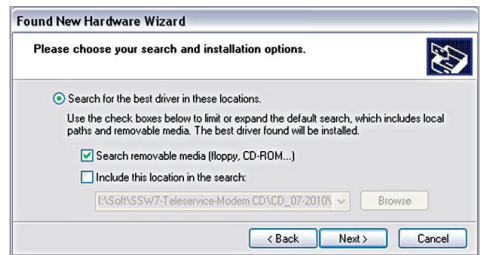
The functions described here are related to 32- and 64-bit Windows² operating systems.

When NETLink® USB Compact is connected to a PC for the first time, the operating system attempts to install an appropriate driver. All necessary files for this operation are on the product CD ROM. Therefore, first of all insert it into your CD/DVD drive.

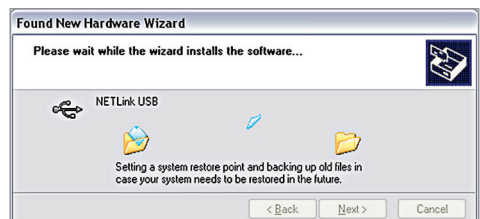
1. As soon as the USB adapter has been connected to a USB port, the operating system starts an installation wizard that guides you through the mostly automatic installation. Here, it should be specified that the source for the USB driver is not be determined automatically.



2. Set the checkmark for „Search removable media“ here.



3. The installation process starts and the corresponding data are copied.

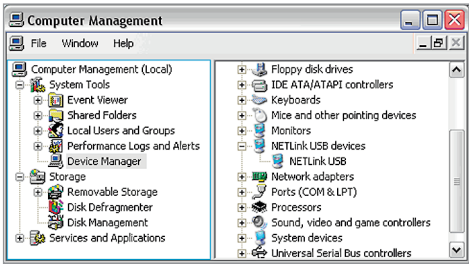


4. The installation process is now completed, and as long as NETLink® USB Compact is operated on the same USB port in your PG/PC, the driver files are not requested again by the operating system.



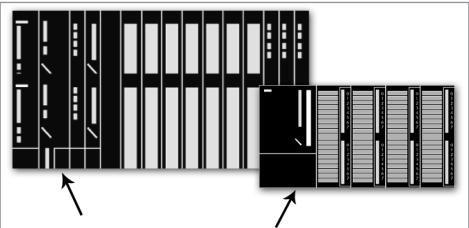
5. After successful installation, the driver information can be checked in the Device Manager (for information).

Note: Continue with Step 1 to integrate NETLink® USB Compact in the PG/PC interface (overleaf).



Installation and Operation

Connect NETlink® USB Compact to the MPI or PROFIBUS interface of your automation system. The operating voltage of the adapter is normally ensured via the USB connection.



LED description

Power LED Blue	Is always on and indicates the general operational readiness. A flashing Power LED indicates an error in the USB communication.
Bus LED Orange/ Green	Flashes orange when the adapter attempts to login on the MPI/PPI/PROFIBUS. After successful login, the LED changes to a constant green.
Active LED Green	Usually in flashing mode (if data exchange occurs).

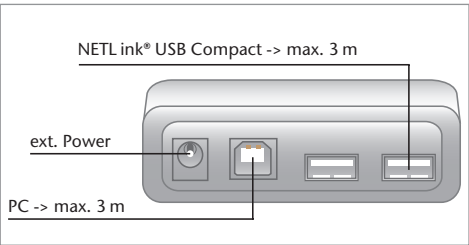


Tips and Tricks

Note: Extend USB with active USB hubs, only!

Since the NETLink® power supply is provided via the USB port, the cable length between two USB interfaces should not be longer than three metres as the voltage drop within the cable is an important factor.

If longer distances have to be bridged, it is recommended to use active USB hubs equipped with their own power supply.



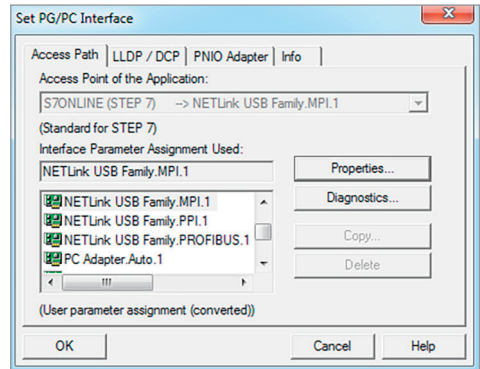
Integration of NETLink® USB Compact in the PG/PC interface of Simatic¹ Engineering Software:

I. Please, install the NETLink-S7-NET driver from the enclosed CD or download the current version from the internet at www.helmholz.com.

II. After the installation are the corresponding driver entities available in the PG/PC interface. Select the appropriate parameter assignments here.

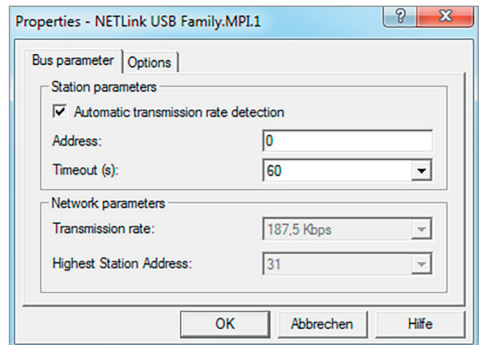
Note: For the TIA Portal¹ as well, the general assignments must be carried out only on the PG/PC interface (accessible via the Windows² Control Panel).

If you're using an old operating system (< XP SP3) you have to add the interface „NETLink®-S7-NET PRO“ manually with an intermediate step during the installation.



III. It is possible to adjust the station-related parameters in the properties of the NETLink® USB Family, if necessary. Otherwise the access path to the connected controllers is now defined with this setting, and it is possible to work with the Simatic¹ engineering programs.

Note: The „Automatic transmission rate detection“ is active after the installation. Some CPUs (or passive participants) do not send any bus parameters at all. If this is the case, an error message is displayed during establishment of the connection and the network-related parameters must be adapted manually (clear checkmark).



Server Icon

In conjunction with the USB device driver, a NETLink® USB Server entity opens automatically after starting an automation application. This program works in the background, and an icon in the taskbar depicts the on-going activity – it serves only as activity information.



Note

The content of this Quick Start Guide has been checked by us for the matching with the described hardware and software. Nevertheless, as differences cannot be ruled out, we cannot make any guarantee for the complete matching. However, the information in this Quick Start Guide is updated regularly. For the use of the purchased products, please observe in each case the most current version of the Quick Start Guide which can be viewed on the World Wide Web at www.helmholz.com and can also be downloaded from there. Our customers are important to us. We look forward to receiving suggestions for improvement and other feedback.

1) Simatic and TIA Portal are registered trademarks of Siemens AG.

2) Windows XP/Windows 7 are registered trademarks of Microsoft Corporation.