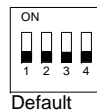


Digital Inputs

- DI5,0 - Fault 1** input (N.C.)
When open – all outputs OFF (no delay)
- DI6,0 - FAN** – Short – Fan Only mode available (Selectable through controller)
Open – Fan Only mode not available
- DI7,0 - Fault 2** input (N.C.)
Only for indication through the protocol
- DI8,0 - Occupancy Sensor**
When the DI8 input (N.C.) is open for 10 minutes, all outputs turn Off.

DIP switch Configuration (S2)

- S2.1** – Fan ON / Auto fan configuration in cool/heat
- | | | |
|-----|---|-------------------------|
| ON | - | Auto fan in Cool |
| OFF | - | Fan ON (always) in Cool |
- S2.2** – 2-pipe / 4-pipe system
- | | | |
|-----|---|--------|
| ON | - | 4-pipe |
| OFF | - | 2-pipe |
- S2.3** –
- | | | |
|-----|---|-------------------------|
| ON | - | Auto fan in Heat |
| OFF | - | Fan ON (always) in Heat |
- S2.4** – “End of network” configuration
- | | | |
|-----|---|--------------------|
| ON | - | End of network |
| OFF | - | Not end of network |



Temperature Sensors Logic

- T1,0 - Return air sensor**
The ambient (room) temperature can be sensed via the return air sensor.
- T2,0 - Change-over sensor**
Mode is automatically selected, based on the water temperature sensed by T2 (2-pipe system only) T2 > 30°C / 86°F → Heat , T2 < 20°C / 68°F → Cool
- T3,0 - Indoor coil sensor**
Soft-start in Heat
When T3 rises above (or equals) 36°C / 97°F → The indoor fan will start working (according to FAN ON or AUTO FAN state)
When the temperature drops below 32°C / 90°F → The indoor fan will turn OFF.
- *When T3 is not connected:
- If AUTO FAN is selected, the indoor fan will start working 30 seconds after demand for heat.
- If FAN ON is selected, the indoor fan will work continuously.

meitav-tec

Tel: +972-3-9626462
Fax: +972-3-9626620
e-mail: support@meitavtec.com

Title:

CTU4524-P-3S-FC-SUPER

Date: 29.03.09

1

Original

29.03.09

Print name: PS-2600

Drawn: A.STAR

Software name: 08210508

Checked: O.Volovitch

Check sum : 7519

Approved: E.Roy

File: CTU4524-P-3S-FC-SUPER.vsd