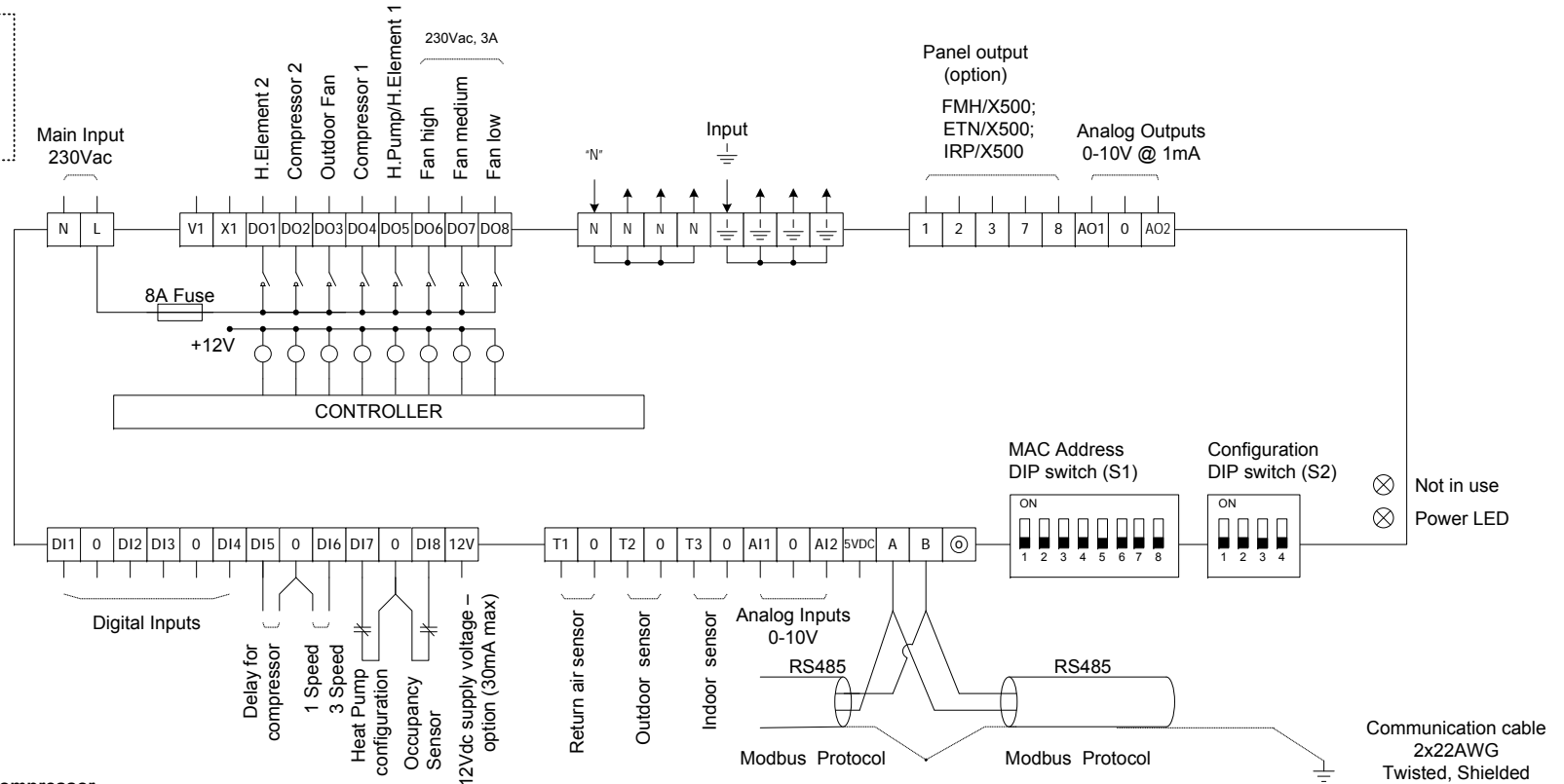


**Important !**  
Disconnect power to the main board before making any changes to DIP switches/ Jumpers, wiring the unit and/or connecting the wall panel.

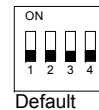


**Digital Inputs**

- DI1,0 DI2,0 DI3,0 DI4,0 – Digital Input**  
Normally open (N.O.) Active when close.  
Only for indication through communication.
- DI5,0 - 3.5 Minutes delay for compressor**  
Open – With delay  
Close – Without delay (for test only)
- DI6,0 - Indoor Fan: 1 Speed / 3 Speeds**  
Open – 3 Speeds  
Close – 1 Speed
- DI7,0 - Heat Pump configuration**  
Normally close (N.C.)  
Open – Heat Pump active in Cool  
Close – Heat Pump active in Heat
- DI8,0 - Occupancy Sensor**  
One of 3 modes (set by communication):  
1 Auto: When the DI8 input (N.C) is open for 10 minutes, all outputs turn Off.(Default)  
2 Start/Stop  
3 Occupied/Non occupied (Economy mode)

**DIP switch Configuration (S2)**

- S2.1 – HC (Heat–Cool) or HP (Heat Pump)**  
ON - In HP configuration  
OFF - In HC configuration
- S2.2 – Electric Heater or Oil/Gas Heater (in HC)**  
ON - Oil/Gas  
OFF - Electric
- S2.3 –**  
ON - °F  
OFF - °C
- S2.4 – “End of network” configuration**  
ON - End of network  
OFF - Not end of network



**Temperature Sensors Logic**

- T1,0 - Return air sensor**
- T2,0 -Outdoor sensor**
- T3,0 - Indoor sensor**
- Deicing (Compressor and outdoor fan are inactive)**  
In Heat mode:  
-0°C/°F < T2 < 16°C/61°F → 5 minutes defrost / 22 minutes break  
In Cool mode:  
-0°C/°F < T3 < 8°C/46.5°F → Deicing occurs until T3 rises above 8°C/46.5°F
- Overheat protection:**  
In Heat mode (Compressor, H.Elements and Outdoor fan inactive):  
Overheat starts when T3 > 68°C/155°F and stops when T3 < 55°C/131°F  
In Cool mode (Compressor, H.Elements, Indoor and Outdoor fans inactive):  
Overheat starts when T2 > 68°C/155°F and stops when T2 < 55°C/131°F

**meitav-tec**

Tel: +972-3-9626462  
Fax: +972-3-9626620  
e-mail: support@meitavtec.com

Title:

**CTU4500-AC-SUPER**

Date: 09.11.08

1

Original

09.11.08

Print name: PS-2600-ASU

Drawn: M.Ruchansky

Software name:

Checked: O.Volovitch

Check sum :

Approved: E.Roy

File: CTU4500-AC-SUPER.vsd