

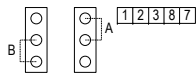
Important !

Disconnect power to the main board before making any changes to DIP switches/Jumpers, wiring the unit and/or connecting the wall panel.

°T Ambient reading from panel or from Main Board (T1,0)

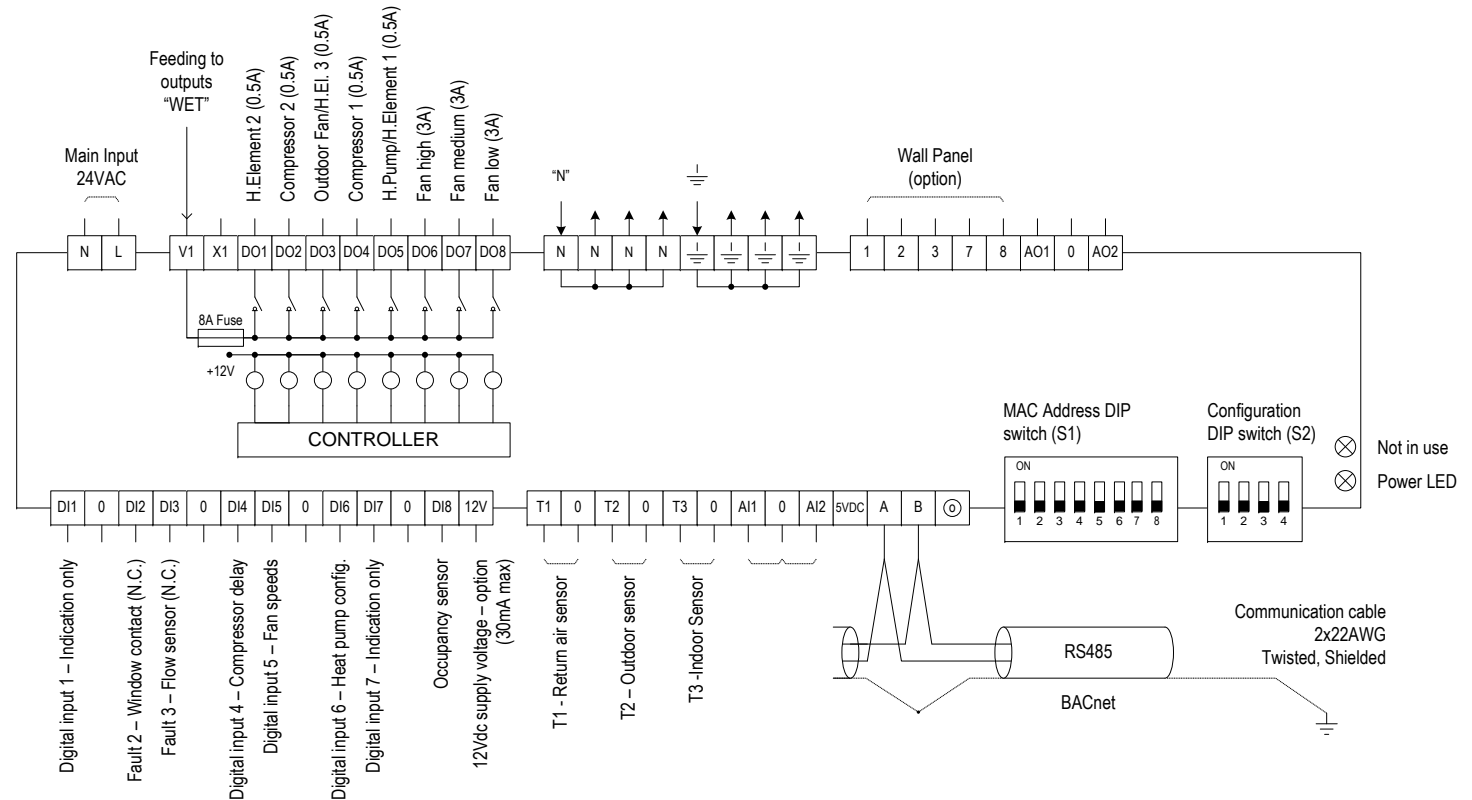
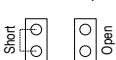
FMH-X500-02 – JP2

"A" position – read temperature from main board.
"B" position – read temperature from panel.



ETN-X500-02 – JP2

OPEN – read temperature from main board.
SHORT – read temperature from panel.



DIP switch Configuration (S2)

S2.1 – HC (Heat-Cool) or HP (Heat Pump)

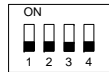
OFF - HP configuration
ON - HC configuration
In HC configuration: DO5 = H.Element 1, DO3 = H.Element 3
In HP configuration: DO5 = Heat Pump, DO3 = Outdoor Fan

S2.2 – Electric Heater or Oil/Gas Heater (in HC)

ON - Oil/Gas
OFF - Electric

S2.3 – Instance number configuration

OFF - Instance number by protocol
ON - Instance number = MAC Address+600 Default



S2.4 – "End of network" configuration

ON - End of network
OFF - Not end of network

Digital inputs

- DI1 - Indication only thorough protocol
- DI2 - Window contact (N.C.)
Turn all outputs OFF or switch to Economy (selectable through protocol).
- DI3 - Flow Sensor (N.C.)
Fault 3 (Flow sensor) – Turn compressors and heat elements OFF.
- DI4 - 3.5 Minutes Compressor delay (Open – with delay)
- DI5 - Fan speeds (Open – 3 Speeds, Close – 1 Speed)
- DI6 - Heat pump config (Open – Active in cool, Close – Active in heat)
- DI7 - Indication only thorough protocol
- DI8 - Occupancy sensor
When the digital input is open for 10 minutes, all outputs turn OFF or controller switch to economy (Selectable through protocol).
Short the (DI8,0) terminals, only when an occupancy sensor is not connected

Temperature Sensors Logic

- T1,0 - Return air sensor
- T2,0 - Outdoor sensor
- T3,0 - Indoor sensor

Deicing (Compressor and outdoor fan are inactive)

In Heat mode:
-0°C/°F < T2 < 16°C/61°F → 5 minutes defrost / 22 minutes break
In Cool mode:
-0°C/°F < T3 < 8°C/46.5°F → Deicing occurs until T3 rises above 8°C/46.5°F

Overheat protection:

In Heat mode (Compressor, H.Elements and Outdoor fan inactive):
Overheat starts when T3 > 68°C/155°F and stops when T3 < 55°C/131°F
In Cool mode (Compressor, Stop, Indoor and Outdoor fans active):
Overheat starts when T2 > 68°C/155°F and stops when T2 < 55°C/131°F

Note: T2 and T3 can be configured through the protocol to be used as indication only (without deicing and overheat protection)

meitav-tec

Tel: +972-3-9626462
Fax: +972-3-9626620
e-mail: support@meitavtec.com

CTU2524-AC-SUPER-02-WET

Date: 21.06.2010

1

Original

21.06.2010

Print name: PS-2600-ASU

Drawn: Danny

Software name: 10405506

Checked: A.Star

Check sum :7E42

Approved: A.Samocho

File: CTU2524-AC-SUPER-02-WET.vsd