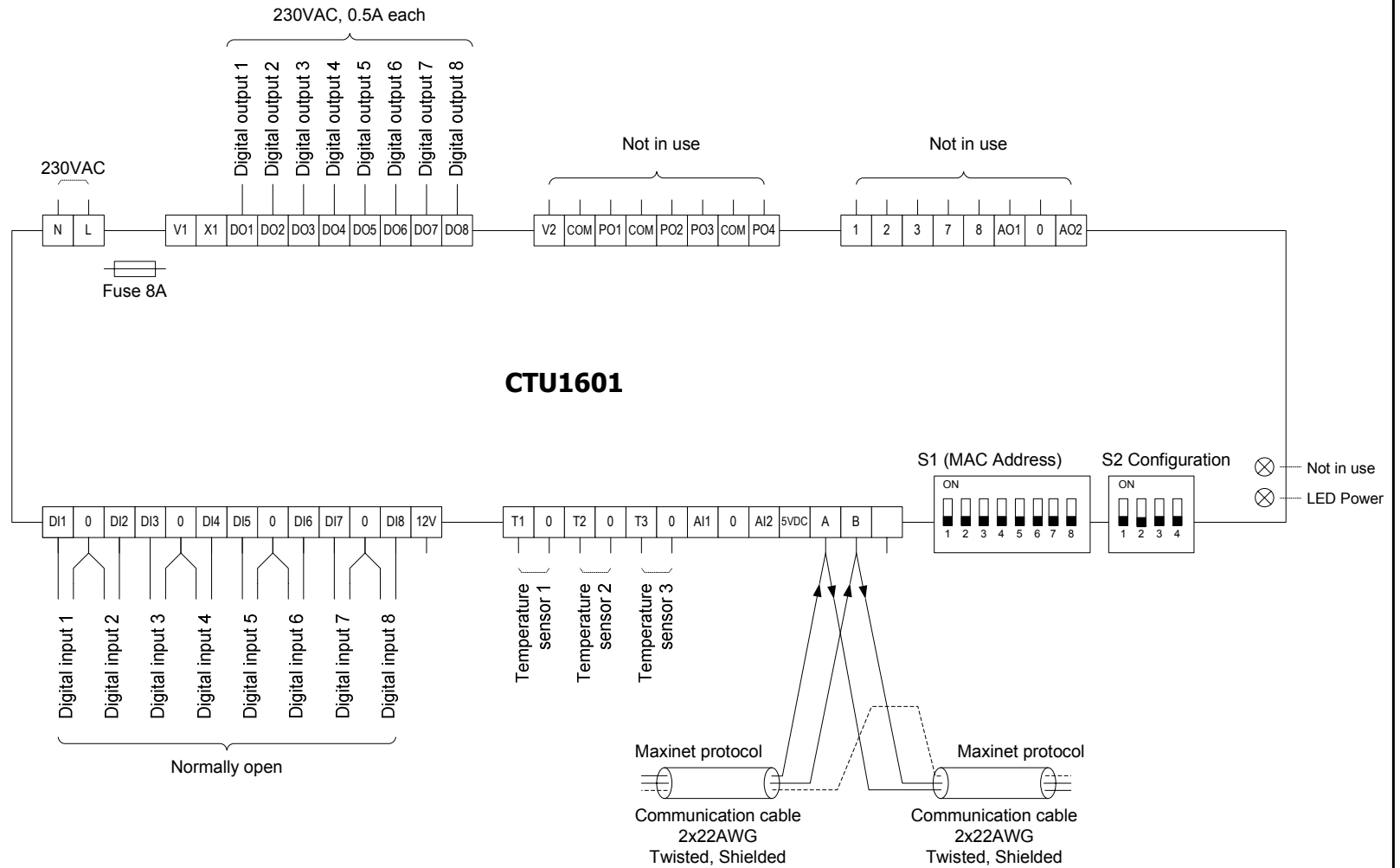
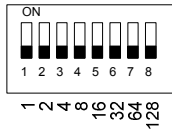


Important !

Disconnect power to the main board before making any changes to DIP switches/Jumpers and while wiring the unit .

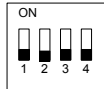


**DIP Switch S1
MAC Address**



DIP Switch S2 - Configuration

- S2.1 - Not in use
- S2.2 - Not in use
- S2.3 - Not in use
- S2.4 - End of line Jumper
 - ON – with jumper
 - OFF – without jumper



*The drawing shows the default configuration.

meitav-tec

Tel: +972-3-9626462
 Fax: +972-3-9626620
 e-mail: support@meitavtec.com

Title: CTU1601				Print name: PS-2600	Drawn: M.Ruchansky
					Checked: S.Lukin
					Approved: E.Roy
Date: 09.08.07	No.	Revision	Date	File: ctu1601(230v).vsd	