



T O U C H P A N E L S

# EFFECTIVE VIEW TOUCH PANELS

# effectiView

TOUCH PANELS

He's grown up and come out of the world's finest workshops; His name is one of the best known in Automation Products; His performance is efficient yet applies to a broad base of solutions. He's called "effectiView" This product is built from a culmination of know how and experience with European fortitude, American business economics and Asian production efficiency. With passion stemming from the worldwide influences of our large diverse engineering team we bring to life the product "effectiView". After 2 years of hard work the team unveiled the solution. Team is the key word and no one ever before has put such a range of different mentalities together and created such a product. Well in November of 2008 we quit saying "Yes we can" and said "Yes we did".

The market drove the need for this product. In today's difficult market, we have to have a solution oriented product, with efficient tools and support, at a low cost, in order to be the winner.

Today you have available a complete product with everything ready to go. New requests want new solutions and answers. Anyone can give an answer, but the best answer is the one that provides, the best solution, at the right time, with the proper cost.

Now you can say "Yes I can" and "Yes I did"

### Product Highlights

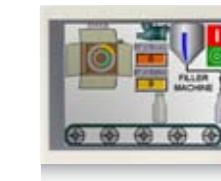
effectiView is a new family of Human Machine Interface products. It has been designed as a low-cost product without compromising features and performance.

All products include a bright TFT display and a resistive touchscreen. Display sizes are available from 3.5" to 12.1" with resolution up to SVGA. Built-in Ethernet interface is available as standard in most models. It is an order option for the entry-level products.

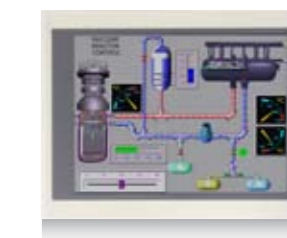
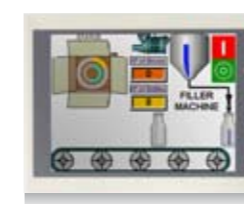
effectiView is the answer to the demand for low-cost entry-level products in all application areas, from factory automation, with machine builders and OEM, to building automation with system integrators.

The eV PanelMaster Designer is the powerful yet intuitive software you will need to create application for the effectiView products. An easy to use graphical interface let you create in minutes appealing interface screens. The features include high-end vector graphics, TrueType font support for multilanguage applications (Windows fonts can be easily used), a rich selection of graphical objects and a flexible handling of object dynamics. All models support recipes, data acquisition and trend presentation. Flexible alarm handling and access validation with passwords are available. The PanelMaster Designer software includes a fast off-line simulator to let you verify the correctness of your applications.

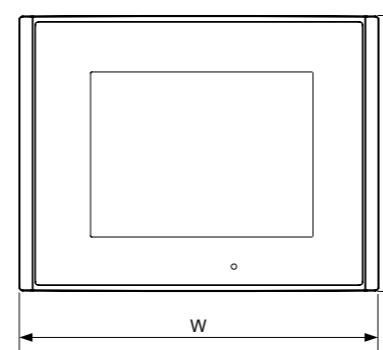
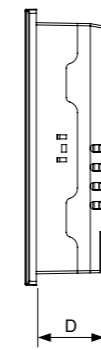
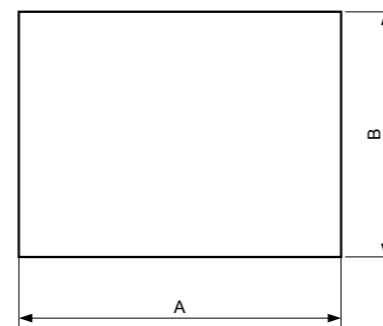
All products with display from 8.4" to 12.1" are also available as Windows CE workstations, without HMI runtime software.



	eV035-TST/eV035-TNT	eV043-TST/eV043-TNT	eV058-TST/eV058-TNT	eV070-WNT
Display	3.5" TFT	4.3" TFT	5.7" TFT	7" TFT
Resolution	320x240	480x272	320x240	800x480
Backlight	LED	LED	LED	LED
Dimming	No	Yes	Yes	Yes
Colors	256	256	256	64K
Portrait Mode	Yes	Yes	Yes	Yes
Touchscreen	Analog resistive	Analog resistive	Analog resistive	Analog resistive
Memory - Flash	4 MB	4 MB	4 MB	16 MB
Memory - RAM with back-up	128 KB	128 KB	128 KB	128 KB
Serial	COM1: RS-232/RS-422/RS-485 COM2: RS-422/RS-485	COM1: RS-232/RS-422/RS-485 COM2: RS-422/RS-485	COM1: RS-232/RS-422/RS-485 COM2: RS-232/RS-422/RS-485	COM1: RS-232/RS-422/RS-485 COM2: RS-232/RS-422/RS-485
Ethernet	- / 10/100	- / 10/100	- / 10/100	10/100
USB	-	-	-	2x Host V2.0
Alarms	Yes	Yes	Yes	Yes
Alarm history	Yes	Yes	Yes	Yes
Recipes	Yes	Yes	Yes	Yes
Password	Yes	Yes	Yes	Yes
Trends	Yes	Yes	Yes	Yes
Max languages	10-Languages	10-Languages	10-Languages	10-Languages
RTC	Yes	Yes	Yes	Yes
Battery	Yes	Yes	Yes	Yes
Power supply	24 VDC	24 VDC	24 VDC	24 VDC
Current consumption (typ)	0.33 A	0.2 A	0.33 A	1.00 A
Operating Temperature	0°C - 50°C	0°C - 50°C	0°C - 50°C	0°C - 50°C
Storage Temperature	-20°C - 60°C	-20°C - 60°C	-20°C - 60°C	-20°C - 60°C
Relative Humidity	10% - 90% @ 50°C, non-condensing	10% - 90% @ 50°C, non-condensing	10% - 90% @ 50°C, non-condensing	10% - 90% @ 50°C, non-condensing
Weight	0.45 Kg	0.45 Kg	0.6Kg	0.75 Kg
Front Panel (WxH) mm	130.0 X 106.2	130.0 x 106.2	186 x 145	186 x 145
Cut-out (WxH) mm	118.5 X 92.5	118.5 x 92.5	174.5 x 132.5	174.5 x 132.5
Depth mm	37	37	38	38
Degree of Protection (front)	IP65	IP65	IP65	IP65
Approvals	CE	CE	CE	CE



### Dimensions



	eV084-TNT	eV104-VNT	eV121-TNT
Display	8.4" TFT	10.4" TFT	12.1" TFT
Resolution	800X600	640x480	800X600
Backlight	CCFL	CCFL	CCFL
Dimming	Yes	Yes	Yes
Colors	64K	64K	64K
Portrait Mode	Yes	Yes	Yes
Touchscreen	Analog resistive	Analog resistive	Analog resistive
Memory - Flash	16 MB	16 MB	16 MB
Memory - RAM with back-up	128 KB	128 KB	128 KB
Serial	COM1: RS-232/RS-422/RS-485 COM2: RS-232/RS-422/RS-485 COM3: RS-232	COM1:RS-232/RS-422/RS-485 COM2:RS-232/RS-422/RS-485 COM3:RS-232	COM1:RS-232/RS-422/RS-485 COM2:RS-232/RS-422/RS-485 COM3: RS-232
Ethernet	10/100	10/100	10/100
USB	2x Host V2.0	3x Host V2.0	2x Host V2.0
Alarms	Yes	Yes	Yes
Alarm history	Yes	Yes	Yes
Recipes	Yes	Yes	Yes
Password	Yes	Yes	Yes
Trends	Yes	Yes	Yes
Max languages	10-Languages	10-Languages	10-Languages
RTC	Yes	Yes	Yes
Battery	Yes	Yes	Yes
Power supply	24 VDC	24 VDC	24 VDC
Current consumption (typ)	1.20 A	1.20 A	1.20 A
Operating Temperature	0°C - 50°C	0°C - 50°C	0°C - 50°C
Storage Temperature	-20°C - 60°C	-20°C - 60°C	-20°C - 60°C
Relative Humidity	10% - 90% @ 50°C, non-condensing	10% - 90% @ 50°C, non-condensing	10% - 90% @ 50°C, non-condensing
Weight	0.9 Kg	1.4 Kg	2.2 Kg
Front Panel (WxH) mm	232.5 x 175.8	297.0 x 224.0	315.0 x 241.0
Cut-out (WxH) mm	221.5 x 164.0	285.5 x 210.5	301.5 x 228.0
Depth mm	49	52	54,5
Degree of Protection (front)	IP65	IP65	IP65
Approvals	CE	CE	CE

